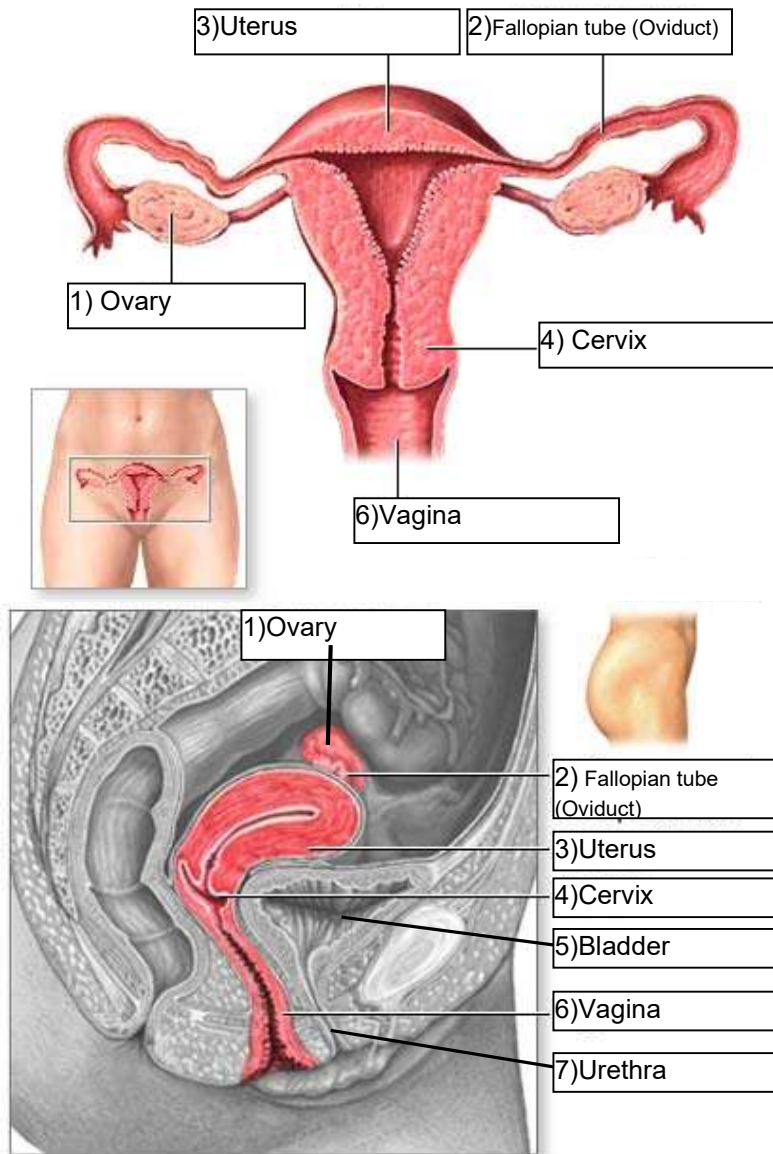


Female Reproduction Anatomy



- 1) Ovary – Location where the female gamete cells are produced
- 2) Fallopian tube (Oviduct) – A tube that transports the egg to the uterus. This is also where the egg becomes fertilized by sperm

- 3) Uterus – Location where the zygote develops into a fetus. Also known as the womb
- 4) Cervix – A strong muscle that keeps the uterus closed during pregnancy. Opens when the baby is ready to be born

- 5) Bladder – Location where urine is stored
- 6) Vagina – Opening that allows sperm to be deposited into the reproductive organs. Also known as the birth canal as the baby passes through the vagina to the outside when it is born
- 7) Urethra – Tube that allows urine to pass out of the body